

# INSTRUCTION MANUAL ▲

## ANI-8WP

(8) Button Wall Plate Control Keypad



A-NeuVideo.com  
Frisco, Texas 75034  
(317) 456-2461

**A-NEUVIDEO®**  
AUDIO / VIDEO MANUFACTURER



## SAFETY INFORMATION



1. To ensure the best results from this product, please read this manual and all other documentation before operating your equipment. Retain all documentation for future reference.
2. Follow all instructions printed on unit chassis for proper operation.
3. To reduce the risk of fire, do not spill water or other liquids into or on the unit, or operate the unit while standing in liquid.
4. Make sure power outlets conform to the power requirements listed on the back of the unit. Keep unit protected from rain, water and excessive moisture.
5. Do not attempt to clean the unit with chemical solvents or aerosol cleaners, as this may damage the unit. Dust with a clean dry cloth.
6. Do not use the unit if the electrical power cord is frayed or broken. The power supply cords should be routed so that they are not likely to be walked on or pinched by items placed upon or against them, paying particular attention to cords and plugs, convenience receptacles, and the point where they exit from the appliance.
7. Do not force switched or external connections in any way. They should all connect easily, without needing to be forced.
8. Always operate the unit with the AC ground wire connected to the electrical system ground. Precautions should be taken so that the means of grounding of a piece of equipment is not defeated.
9. AC voltage must be correct and the same as that printed on the rear of the unit. Damage caused by connection to improper AC voltage is not covered by any warranty.
10. Turn power off and disconnect unit from AC current before making connections.
11. Never hold a power switch in the "ON" position.
12. This unit should be installed in a cool dry place, away from sources of excessive heat, vibration, dust, moisture and cold. Do not use the unit near stoves, heat registers, radiators, or other heat producing devices.
13. Do not block fan intake or exhaust ports. Do not operate equipment on a surface or in an environment which may impede the normal flow of air around the unit, such as a bed, rug, carpet, or completely enclosed rack. If the unit is used in an extremely dusty or smoky environment, the unit should be periodically "blown free" of foreign dust and matter.
14. To reduce the risk of electric shock, do not remove the cover. There are no user serviceable parts inside. Refer all servicing to qualified service personnel. There are no user serviceable parts inside.
15. When moving the unit, disconnect input ports first, then remove the power cable; finally, disconnect the interconnecting cables to other devices.
16. Do not drive the inputs with a signal level greater than that required to drive equipment to full output.
17. The equipment power cord should be unplugged from the outlet when left unused for a long period of time.
18. Save the carton and packing material even if the equipment has arrived in good condition. Should you ever need to ship the unit, use only the original factory packing.
19. Service Information Equipment should be serviced by qualified service personnel when:
  - A. The power supply cord or the plug has been damaged.
  - B. Objects have fallen, or liquid has been spilled into the equipment.
  - C. The equipment has been exposed to rain.
  - D. The equipment does not appear to operate normally, or exhibits a marked change in performance.
  - E. The equipment has been dropped, or the enclosure damaged.

## ▶ CONTENTS

INTRODUCTION, CONTENTS & SYSTEM REQUIREMENTS .....	1
FEATURES & SPECIFICATIONS .....	2
FRONT PANEL .....	3
REAR / SIDE PANEL .....	3
TELNET COMMANDS .....	4
PROGRAMMING .....	5
FIND THE ANI-8WP IP ADDRESS .....	5
TELNET CONTROL .....	6
WEBGUI CONTROL .....	7
MACRO SETTINGS .....	7
EXTENSION MACRO .....	9
COMMAND SETTINGS .....	10
DEVICE SETTINGS .....	10
KEY SETTINGS .....	11
SCHEDULE .....	12
NETWORK SETTINGS .....	13
SYSTEM SETTINGS .....	14
TIME SETTINGS .....	14
CONNECTION DIAGRAM .....	15

## INTRODUCTION

The ANI-8WP Wall-Plate Control System is a fantastic and useful design for system installers and smart home users. With (8) direct macro command buttons, plus an additional (8) macro commands in the WebGUI, this unit has up to (16) commands that can be executed with one push of a button for a total of 128 command capacity inside this box. Soft and colorful LED design makes for a professional presentation and the PoE (Power over Ethernet) function allows for a flexible installation without the need for an external power supply. Further, this units relay output and scheduling functions can be used to raise and lower projection screens, control matrix switchers or any device that supports Telnet. This product has a 3 year warranty.

## PACKAGE CONTENTS

Before attempting to use this unit, please check the packaging and make sure the following items are contained in the shipping carton:

- ANI-8WP Wall Plate Control System
- USB Type A to Mini USB OTG Connector
- (2) 3.5mm Terminal Block Pitch
- Decora Plate (white)
- 5 V/2.6A Power Adaptor
- Button Stickers (56 pcs)
- Users Guide

## SYSTEM REQUIREMENTS

Active internet connection from Hub or Router and output to DC controllable device.

## SAFETY PRECAUTIONS

Please read all instructions before attempting to unpack, install or operate this equipment and before connecting the power supply. Please keep the following in mind as you unpack and install this equipment:

- Always follow basic safety precautions to reduce the risk of fire, electrical shock and injury to persons.
- To prevent fire or shock hazard, do not expose the unit to rain, moisture or install this product near water.
- Never spill liquid of any kind on or into this product.
- Never push an object of any kind into this product through any openings or empty slots in the unit, as you may damage parts inside the unit.
- Do not attach the power supply cabling to building surfaces.
- Use only the supplied power supply unit (PSU). Do not use the PSU if it is damaged.
- Do not allow anything to rest on the power cabling or allow any weight to be placed upon it or any person walk on it.
- To protect the unit from overheating, do not block any vents or openings in the unit housing that provide ventilation and allow for sufficient space for air to circulate around the unit.

## DISCLAIMERS

The information in this manual has been carefully checked and is believed to be accurate. We assume no responsibility for any infringements of patents or other rights of third parties which may result from its use.

We assume no responsibility for any inaccuracies that may be contained in this document. We make no commitment to update or to keep current the information contained in this document.

We reserve the right to make improvements to this document and/or product at any time and without notice.

## COPYRIGHT NOTICE

No part of this document may be reproduced, transmitted, transcribed, stored in a retrieval system, or any of its part translated into any language or computer file, in any form or by any means — electronic, mechanical, magnetic, optical, chemical, manual, or otherwise — without the express written permission and consent.

© Copyright 2016. All Rights Reserved.  
Version 1.6 AUG 2016

## TRADEMARK ACKNOWLEDGMENTS

All products or service names mentioned in this document may be trademarks of the companies with which they are associated.

## FEATURES

---

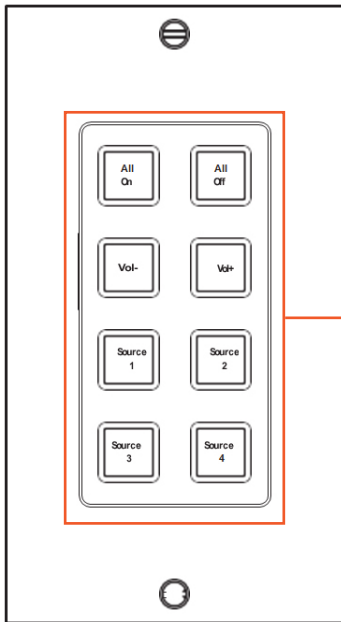
- (8) Macro buttons + (8) extra Macro programmable commands via WebGUI for up to 128 commands
- (1) Relay Output for additional device control
- Scheduling control for date/time specific events
- Supports Key Pad, Telnet and WebGUI control
- PoE or external DC power supply
- US (1) Gang wall plate design with adjustable LED intensity
- (56) Button Labels included (28 Pre-Printed & 28 Blank)

## SPECIFICATIONS

---

- **Input Ports:** (8) Buttons
- **Output Ports:** (1) Relay (Terminal Block)  
24V 10A, 100mOhms@1A 6VDC  
(1) IP Control (RJ- 45)
- **Power Supply:** 5V/2.6A DC (US/EU standards, CE/FCC/UL certified)
- **ESD Protection:** Human Body Model:  
±8kV (air-gap discharge)  
±4kV (contact discharge)
- **Dimensions (WxDxH):** 1.8 x 1.5 x 4 in (46x35.5x103.5mm) / Jack Excluded
- **Weight:** 0.2 lb (Unit only) / 1.1 lb (Net)
- **Chassis Material:** Metal
- **Color:** White
- **Operating Temperature:** 32°F~104°F (0°C~40°C)
- **Storage Temperature:** -4°F~140°F (-20°C~60°C)
- **Relative Humidity:** 20~90% RH (non-condensing)
- **Power Consumption:** 3.3W

### FRONT PANEL

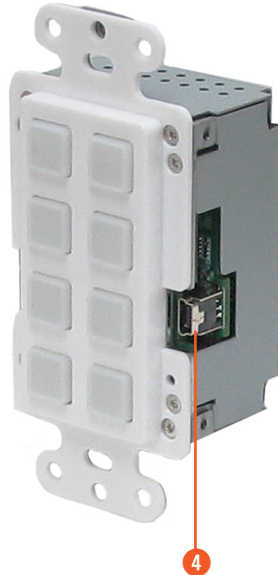
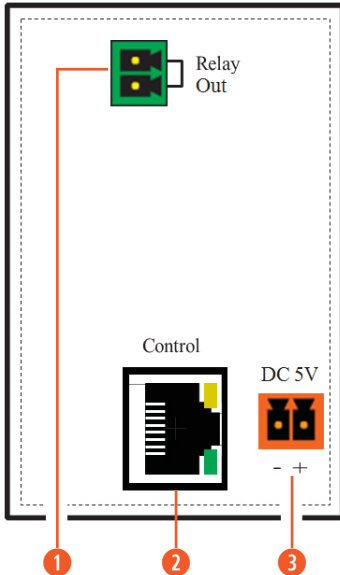


**1 1~8 MACRO BUTTONS:** Each buttons has (2) colors of LEDs with adjustable brightness (0~100%) and can accommodate up to (16) commands.

Scene 1	Source 1	Relay On	Light 20%	All On	Curtain Up	Lock
Scene 2	Source 2	Relay Off	Light 50%	All Off	Curtain Down	Unlock
Scene 3	Source 3	Projector Up	Light 70%	Vol+	Mute On	Screen Up
Scene 4	Source 4	Projector Down	Light 100%	Vol-	Mute Off	Screen Down

**28 Preprinted Button Labels Included**

### REAR / SIDE PANEL



**1 RELAY OUT:** Connect with a device that supports DC 0~24V/8A power or signal that supports a relay function.

**2 CONTROL:** Connect from a PC/Laptop with active internet service, Telnet or WebGUI control via a RJ-45 terminated cable. This slot supports the PoE PD 48V function, which means when the connected server/Hub supports PoE 48V, it can be powered without the included DC supply.

**3 DC 5V:** Plug the 5V DC power adaptor included in the package and connect to an AC wall outlet for power supply.

**4 FIRMWARE UPDATE PORT:** Procedure covered in a separate document

## TELNET COMMANDS

COMMAND	DESCRIPTION	PARAMETER
IPCONFIG	Displays the current IP configure	NONE
SIPADDR XXX.XXX.XXX.XXX	Sets ethernet IP address	XXX=0~255
SNETMASK XXX.XXX.XXX.XXX	Sets ethernet net mask	XXX=0~255
SGATEWAY XXX.XXX.XXX.XXX	Sets ethernet gateway	XXX=0~255
SIPMODE N	Sets ethernet IP mode	N=STATIC/DHCP
VER	Shows unit firmware version	NONE
FADEFAULT	All configure and macro set to factory default	NONE
ETH_FADEFAULT	All ethernet configure set to factory*	NONE
REBOOT	System reboot	NONE
HELP	Shows command list	NONE
HELP N	Shows descript of command	N: COMMAND NAME
RELAY N N1	Relay control	N (PORT)=1 N1=OPEN/CLOSE/TOGGLE
LEDBLUE N N1	LED blue backlight control	N (LEN NO.)=1~8 N1=% (0-100)
LEDRED N N1	LED red backlight control	N (LEN NO.)=1~8 N1=% (0-100)
LEDBLUES N	All blue LED backlight control	N=% (0-100)
LEDREDS N	All red LED backlight control	N=% (0-100)
LEDSHOW N	LED dimming mode control	LEDSHOW N N=ON/OFF/TOGGLE
BACKLIGHT N	All LED backlight control	N=% (0-100)
KEY_PRESS N RELEASE KEY_PRESS N HOLD	Key press trigger type	KEY_PRESS N RELEASE N=PORT NUMBER KEY_PRESS N HOLD N=PORT NUMBER
MACRO RUN N	Macro setting	MACRO RUN N N=MACRO ID (1~16) MACRO STOP

**Note:** \*Commands are case-insensitive. All commands will not be executed unless followed by a carriage return. Typically represented by \x0d\x0a

Programming is all done thru the Web-GUI. Enter the ANI-8WP IP address in a compatible browser to enter the programming section. To find the IP address, follow the instructions in the section below.

## FIND THE ANI-8WP IP ADDRESS

The program **ANI-8WP-GUI\_v2000.exe** can be used to discover the IP address of the ANI-8WP or to change its IP settings. Download the software from [www.A-NeuVideo.com](http://www.A-NeuVideo.com) with file name **ANI-8WP-GUI\_v2000.exe** and save it in a directory where you can access it later.

Connect the Control System with a PC/Laptop through the Ethernet port of an active network system and open the **ANI-8WP-GUI\_v2000.exe**. Click on **“Find Devices”** on the Network and a list of the devices connected to the **“Control System”** will show up.

Find Devices on Network			
Product Name	Description	IP Address	MAC Address

**Note:** The default IP setting is **192.168.1.50** and set the Static IP or DHCP via the IP mode of **ANI-8WP-GUI\_v2000**. Click **“Save”** then **“Reboot”** for any changes you make to take affect.

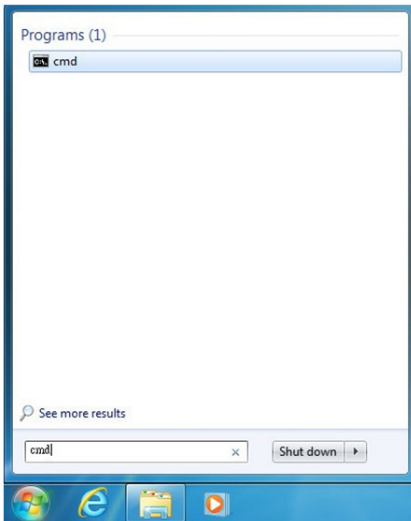
The user may use the IP Address to find the control device through Telnet or the WebGUI tools.

MAC Address	F8:22:85:00:04:B7
IP Address	192.168.5.241
Subnet Mask	255.255.255.0
Gateway IP	192.168.1.254
DNS	0.0.0.0
IP Mode	Static ▼
Web GUI Port	80
Telnet Port	23
S / N	SN:2236
Firmware Version	v2.02
Hardware Version	v1.00

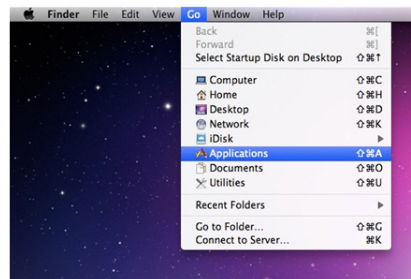


## TELNET CONTROL

Before attempting to use the Telnet control, please ensure that both the Matrix (via the 'LAN /CONTROL' port) and the PC/Laptop are connected to the same active networks.



To access the Telnet control in Windows 7, click on the 'Start' menu and type "cmd" in the Search field then press **ENTER**. Under Windows XP go to the 'Start' menu and click on "Run", type "cmd" with then press **ENTER**.



Under Mac OS X, go to  
**Go→Applications→Utilities→Terminal**

Once in the command line interface (CLI) type "telnet", then the IP address of the unit and "23", then hit **ENTER**.

```
Microsoft Windows [Version 6.1.7601]
Copyright (c) 2009 Microsoft Corporation. All rights reserved.

C:\Users\Administrator>telnet 192.168.5.80 23
```

This will bring us into the unit which we wish to control. Type "help" to list the available commands.

```
Welcome to TELNET.
>?
HELP      : SHOW DESCRIPT OF COMMAND
           USE <HELP N, N=COMMAND NAME> TO SHOW DESCRIPT OF COMMAND
?         : SHOW DESCRIPT OF COMMAND
           USE <? N, N=COMMAND NAME> TO SHOW DESCRIPT OF COMMAND
IPCONFIG  : DISPLAY THE CURRENT IPCONFIG
SIPADDR   : SET ETHERNET IP ADDRESS
SNETMASK  : SET ETHERNET NETMASK
SGATEWAY  : SET ETHERNET GATEWAY
SIPMODE   : SET ETHERNET IP MODE
VER       : SHOW UNIT FIRMWARE VERSION
FADEFAULT : ALL CONFIGURE SET TO FACTORY DEFAULT
ETH_FADEFAULT : ALL ETHERNET CONFIGURE SET TO FACTORY DEFAULT
REBOOT    : SYSTEM REBOOT
RELAY     : RELAY CONTROL
LEDBLUE   : LED BLUE BACKLIGHT CONTROL
LEDRED    : LED RED BACKLIGHT CONTROL
KEY_PRESS : KEY PRESS TRIGGER TYPE
MACRO     : MACRO SETTING
LEDBLUES  : ALL BLUE LED BACKLIGHT CONTROL
LEDREDS   : ALL RED LED BACKLIGHT CONTROL
BACKLIGHT : ALL LED BACKLIGHT CONTROL
LEDSHOW   : LED DIMMING MODE CONTROL
```

**Note:** Commands will not be executed unless followed by a carriage return. Commands are case-sensitive. If the IP is changed then the IP Address required for Telnet access will also change accordingly. Typically represented by \x0d\x0a



## WEBGUI CONTROL

On a PC/Laptop that is connected to an active network system, open a web browser and type device's IP address on the web address entry bar. A security page will appear prompting for a "Username" and "Password", please key in "admin" for both to enter.

**Note:** The Default IP setting is on Static with address at **192.168.1.50**.

The browser will display the device's Macro Setting, Extension Macro, Command Settings, Schedule, Network and System Settings pages for users to control.

Login

Username

Password

## MACRO SETTINGS

The Background Light Bar allows the user with instantly change the LEDs lighting percentage based on the original illuminate setting. There are (6) Macros inserted as the default setting for testing the Wall-Plate's control system functionality. Click on **MACRO 1~6** to demonstrate the function of lighting the LEDs.

- **MACRO 1:** Lights up the Red backlight LEDs with 100% brightness sequentially from 1~8 with every 500ms.
- **MACRO 2:** Lights up the Blue backlight LEDs with 100% brightness sequentially from 1~8 with every 500ms.
- **MACRO 3:** Switches off all the Red backlight LEDs with 0% brightness.
- **MARCO 4:** Switches off all the Blue backlight LEDs with 0% brightness.
- **MARCO 5:** LED show mode toggle, switches off Demo mode.
- **MACRO 6:** Lights up the Blue backlight LEDs with 10% brightness. Switches off all the Blue backlight LEDs with 0% brightness. Switches Off & On Relay 1 with a delay of 1000ms.

Disables default testing mode, click on **DEMO MODE/MARCO 5** to switch it off.

Macro Settings

- Extension Macro
- Command Settings
- Device Settings
- Key Settings
- Schedule
- Network Settings
- System Settings
- Time Settings

Macro

Background Light

100

1 LED RED 100%

2 LED BLUE 100%

3 RED LED OFF

4 BLUE LED OFF

5 LED DEMO

6 LED/RLY DEMO

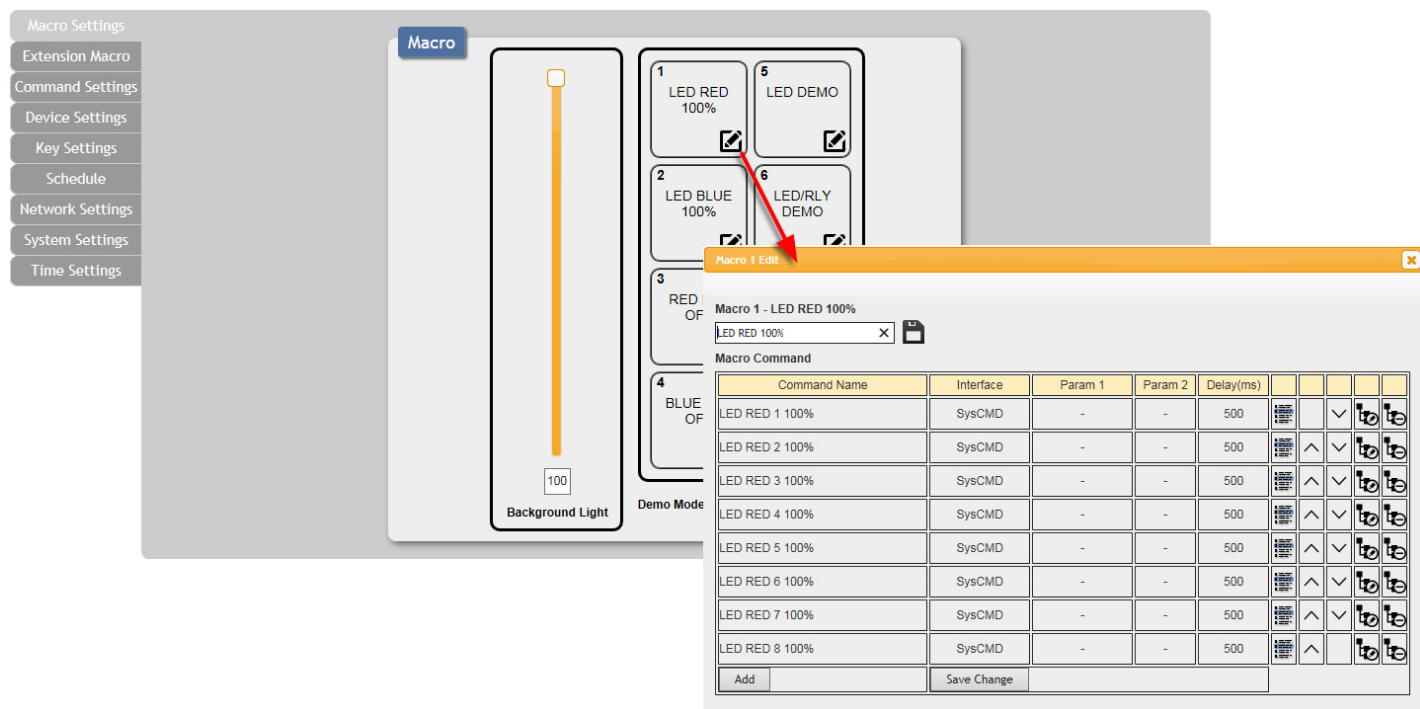
7 HD-44G OUT 1 INPUT 1


8 HD-44G OUT 1 INPUT 2

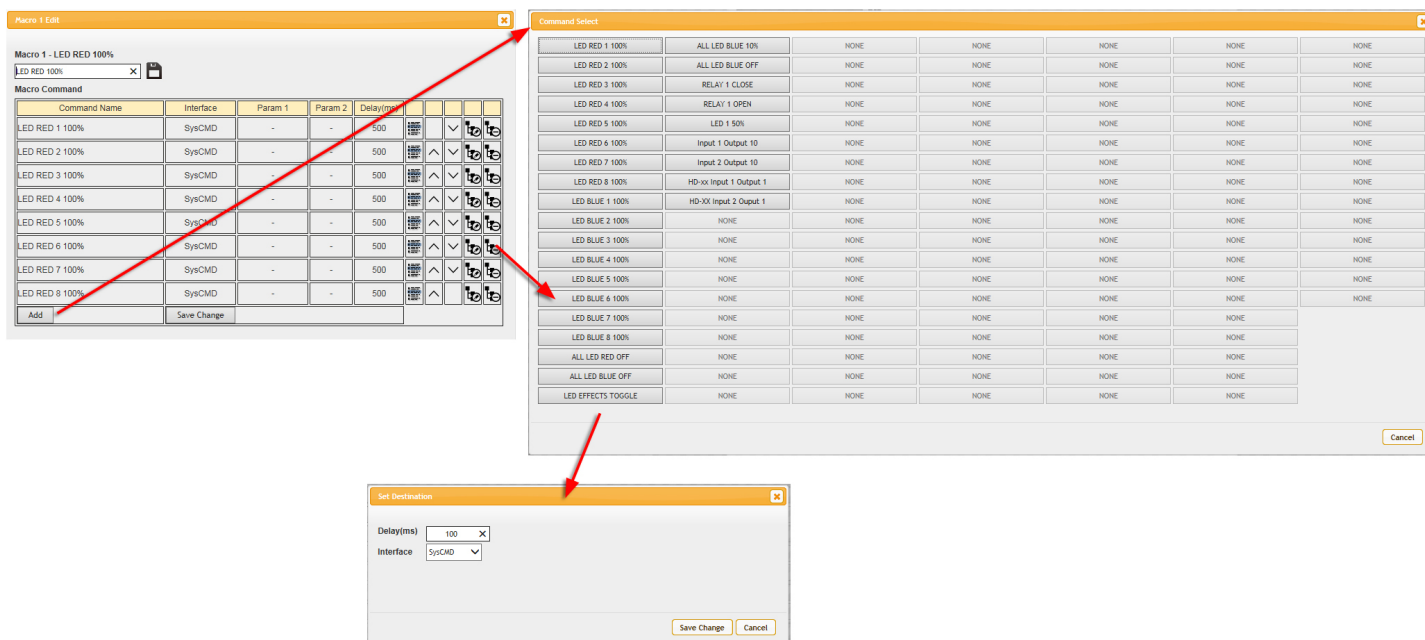
Demo Mode: ☒ ON

Version: v2.00

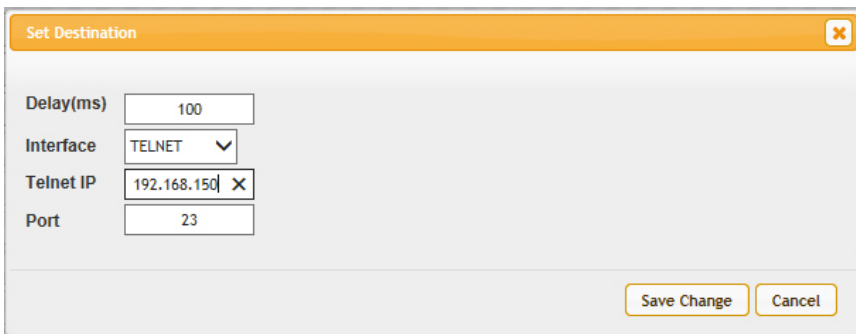
Click on the icon to edit command settings. Up/down arrows are to move the commands up or down and the button is to delete the command.



Click on  Insert button/Add to insert commands. Commands can be set to control the Wall-Plate Control Box/SysCMD, other devices connected within the same Telnet system/Internet area and Relay devices connected through the Relay outputs of Wall-Plate Control Box with delay time. It is suggested the delay time is >100ms once the setting is confirmed, double click on **“Save Change”**.



Commands set to control the device within the same Telnet system or internet area require to set its IP and Port number and it is strongly recommend to set the delay time>500ms in order to secure a successful command sending. Once the setting is done click on **“Save Change”**.



Set Destination

Delay(ms)

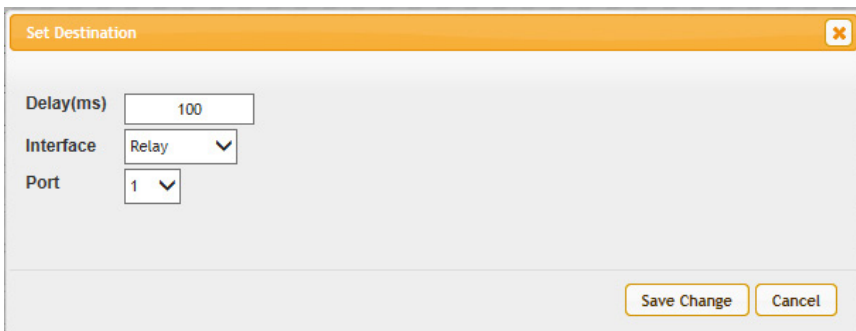
Interface

Telnet IP

Port

Save Change Cancel

Commands set to control the Relay devices require to set the Port number. Click on “**Save Change**” to confirm the setting.



Set Destination

Delay(ms)

Interface

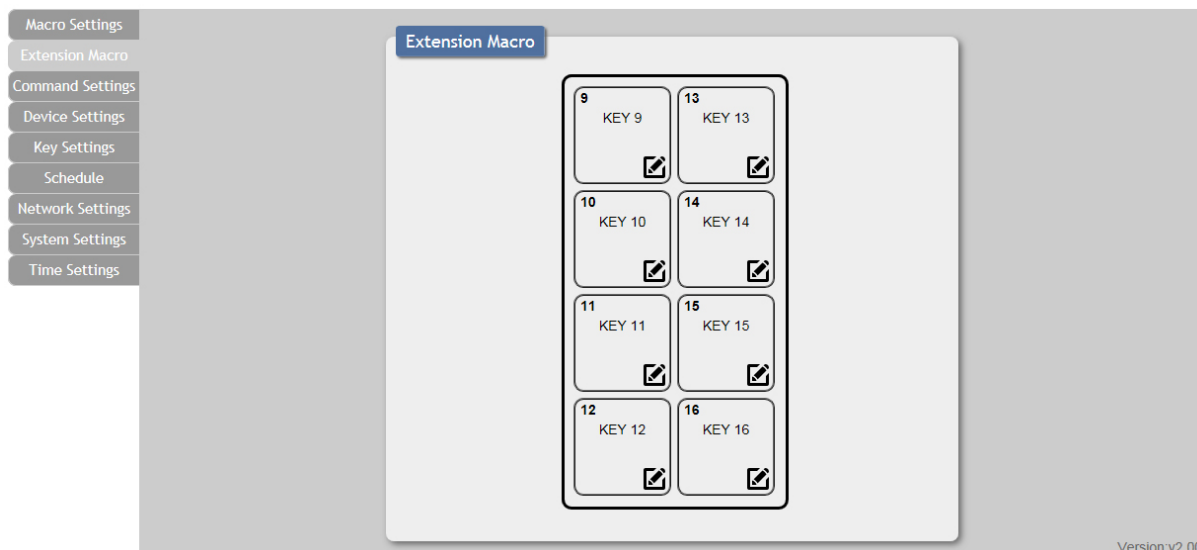
Port

Save Change Cancel

## EXTENSION MACRO

Click on ‘**Extension Macro**’ to execute/edit up to (8) more Macro actions.

A macro can have (16) commands, and if you need to save more than (16) commands to a macro, you can save some commands to an extension Macro and keep a command in Macro for “**MACRO RUN X**” to call an extension macro. For instance, if you want to run (20) commands, you can save (15) to a Macro, say Macro 1 and the other (5) commands to an Extension Macro, say Extension Macro 11. Then you save “**MACRO RUN 11**” as the last command of Macro (1) to call the commands saved in the Extension Macro. After all these are done, the (20) commands saved will start to run when you press the button Macro 1.



Macro Settings

Extension Macro

Command Settings

Device Settings

Key Settings

Schedule

Network Settings

System Settings

Time Settings

Extension Macro

9 KEY 9	13 KEY 13
10 KEY 10	14 KEY 14
11 KEY 11	15 KEY 15
12 KEY 12	16 KEY 16

Version:v2.00

## COMMAND SETTINGS

Click on 'Command Settings' to insert new commands or delete commands.

Commands under (128) characters including spaces can be built up to (128) commands, commands over (128) characters and under (512) characters including spaces can be built up to (32) commands in addition to (96) commands of (128) characters and under. Click on "Save Change" to save the commands inserted.

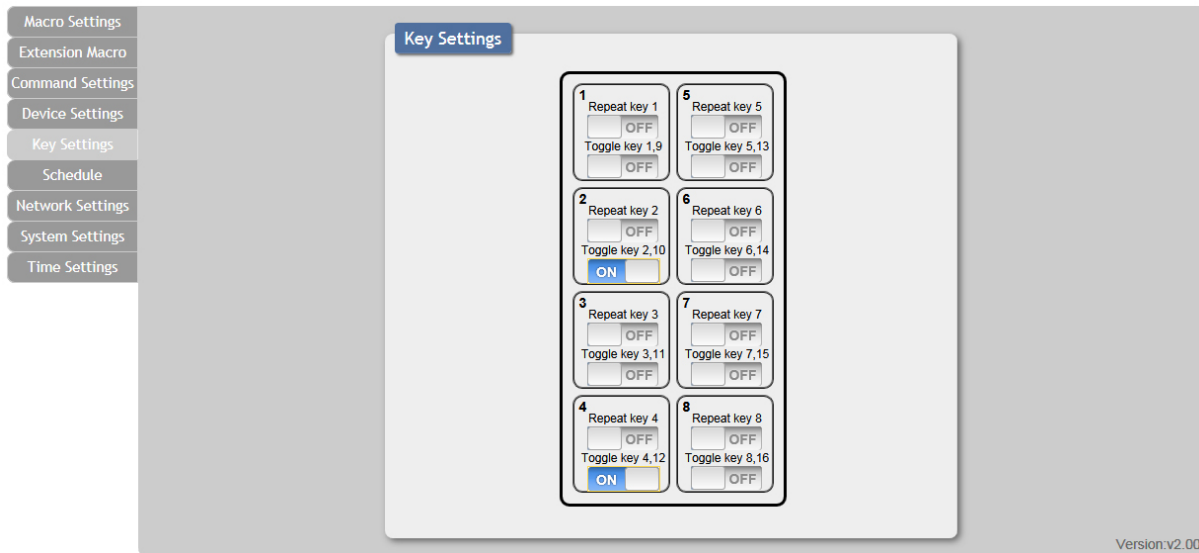
You can truncate commands in the command data field. In other words, you can put more than one data statement.

**For Example:** LEDRED 1 100\x0d\x0a RELAY 1 CLOSE\x0d\x0a

## DEVICE SETTINGS

## KEY SETTINGS

The Toggle function is when you press a button to execute one series of functions and then press it a second time to execute another series of functions. It is a new function and may not be in the manual. Below are the steps to enable this function.



Turn the LED ON and OFF on the 3rd button for instance.

1. Go to '**Key Settings**' and turn on "**Toggle**" for Button 3

2. The command to turn ON the red LED is "**LEDRED 3 100\x0d\x0a**" and the one to turn it OFF is "**LEDRED 3 0\x0d\x0a**". Make sure you have saved these two commands in "**Command Settings**".

3. In '**Macro Settings**', save "**LEDRED 3 100\x0d\x0a**" to Button 3.

4. In '**Extension Macro**', save "**LEDRED 3 0\x0d\x0a**" to Button 11.

After saving the settings, when you press Button 3 the first time, the red LED will be ON, and when you press it a second time, the LED will be OFF.

When you turn on the toggle function for a button, the first time you press the button, the commands saved in the Macro Settings will be executed, and the second time you press the button, the commands saved in the Extension Macro will be executed.

The buttons you see in Macro settings are mapped with those you see in the Extension Macros. That is, Button 1's Extension Macro is Button 9, Button 2's is Button 10, etc.

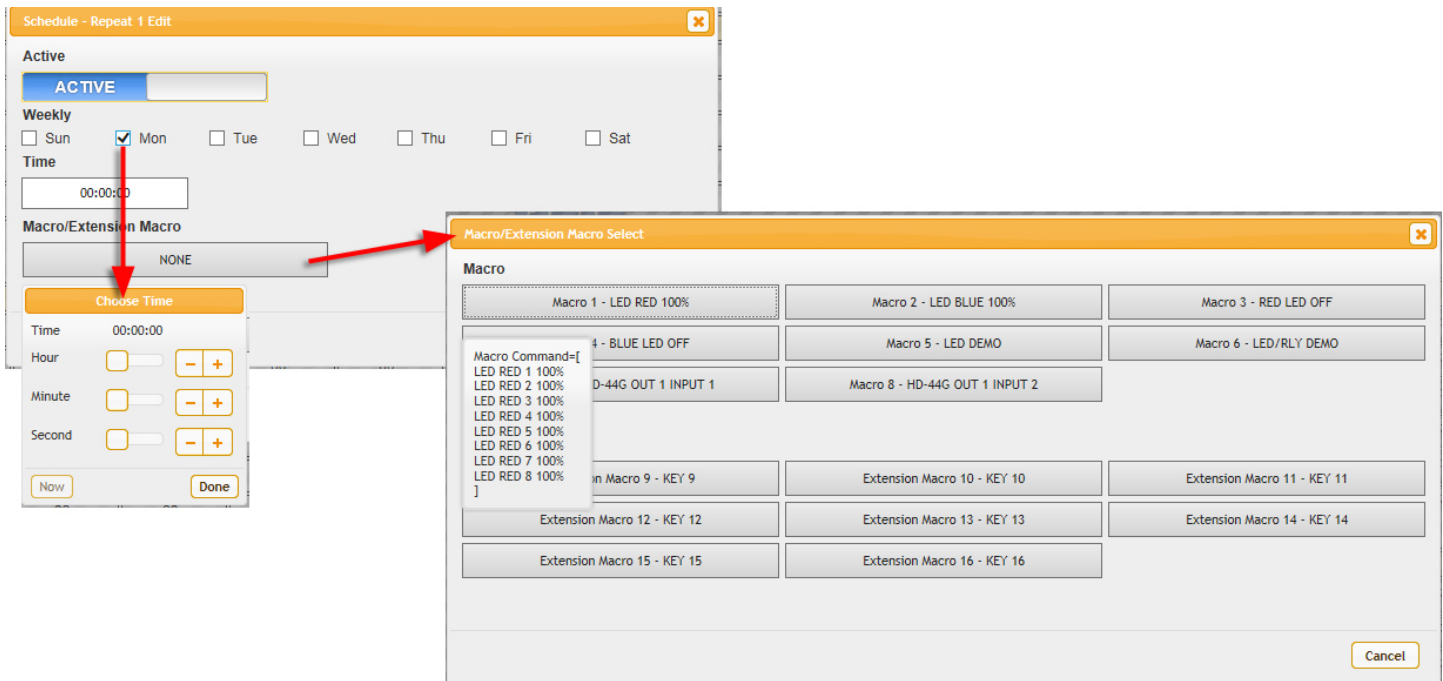
## SCHEDULE

Click on 'Schedule' to set the executing time schedule of the Macro(s).

\*\*\*\***Note**\*\*\*\* The scheduling system will retain the last date and time set in memory for up to 48hrs after power loss. After 48hrs the system will reset the date and time automatically back to 2015/01/01 00:00:00. All other settings will remain.

Click on "Edit" from the "Repeat" column to set the macro command(s) to be activated repeatedly on a set time.

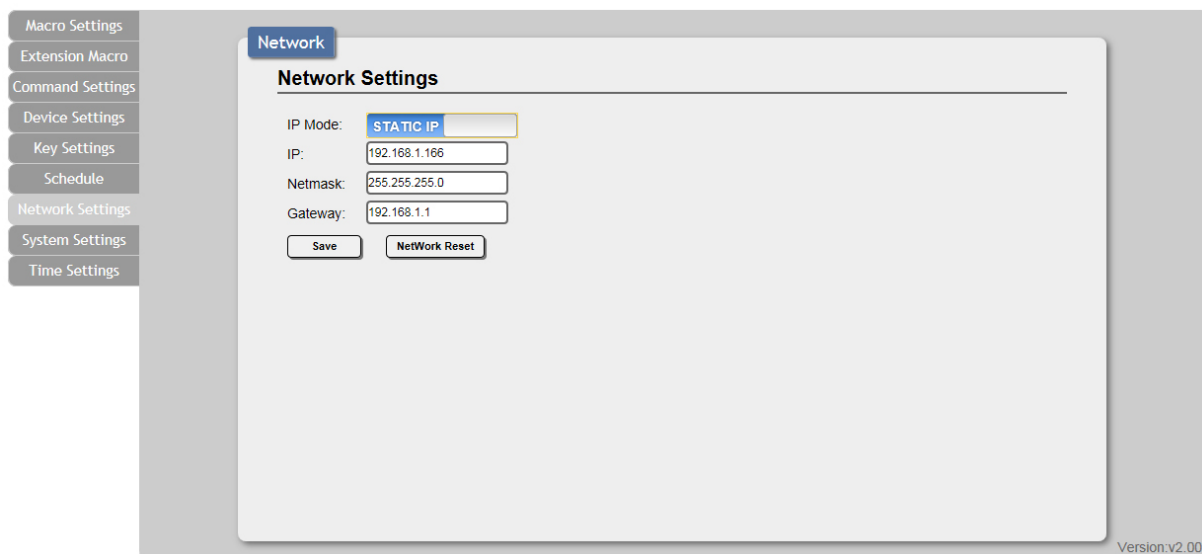




Click on “**Edit**” from the “**Once**” column to set the macro command(s) to be activated on a set time only.

## NETWORK SETTINGS

Click on ‘**Network Settings**’ to reset the IP, Netmask or Gateway address.



## SYSTEM SETTINGS

Click on '**System Settings**' to reset the WebGUI login password and timeout settings and save or download the Macro settings. Reset to Default allows the IP and login ID & password to be reset back to factory default.

**System**

**Web User Setting**

Username

Old Password

New Password

Confirm Password

Save

**Web Login Timeout(Minute)**

5 min

**Download Current Configuration**

Download

**Restore Configuration**

Browse... Restore

**Reset to Default**

ALL Reset

**Reboot the Unit**

REBOOT

**XML Edit**

```
<?xml version="1.0" encoding="utf-8"?>
<Cypress product="CDPW-K1" downloadTime="2016/04/08 13:38:30">
  <macro>
    <backlight param1="100" ></backlight>
    <macroadd param1="1" param2="LED RED 100%" ></macroadd>
    <macroadd param1="2" param2="LED BLUE 100%" ></macroadd>
    <macroadd param1="3" param2="RED LED OFF" ></macroadd>
    <macroadd param1="4" param2="BLUE LED OFF" ></macroadd>
    <macroadd param1="5" param2="LED DEMO" ></macroadd>
    <macroadd param1="6" param2="LED RLY DEMO" ></macroadd>
    <macroadd param1="7" param2="HD-44G OUT 1 INPUT 1" ></macroadd>
    <macroadd param1="8" param2="HD-44G OUT 1 INPUT 2" ></macroadd>
  </macro>
  <Trigger1>
    <macroadd param1="1" param2="1" param3="1" param4="SysCMD" param5="1" param6="1" param7="500" ></macroadd>
    <macroadd param1="1" param2="2" param3="2" param4="SysCMD" param5="1" param6="1" param7="500" ></macroadd>
    <macroadd param1="1" param2="3" param3="3" param4="SysCMD" param5="1" param6="1" param7="500" ></macroadd>
    <macroadd param1="1" param2="4" param3="4" param4="SysCMD" param5="1" param6="1" param7="500" ></macroadd>
    <macroadd param1="1" param2="5" param3="5" param4="SysCMD" param5="1" param6="1" param7="500" ></macroadd>
    <macroadd param1="1" param2="6" param3="6" param4="SysCMD" param5="1" param6="1" param7="500" ></macroadd>
    <macroadd param1="1" param2="7" param3="7" param4="SysCMD" param5="1" param6="1" param7="500" ></macroadd>
    <macroadd param1="1" param2="8" param3="8" param4="SysCMD" param5="1" param6="1" param7="500" ></macroadd>
  </Trigger1>
  <Trigger2>
    <macroadd param1="2" param2="1" param3="9" param4="SysCMD" param5="1" param6="1" param7="500" ></macroadd>
    <macroadd param1="2" param2="2" param3="10" param4="SysCMD" param5="1" param6="1" param7="500" ></macroadd>
    <macroadd param1="2" param2="3" param3="11" param4="SysCMD" param5="1" param6="1" param7="500" ></macroadd>
    <macroadd param1="2" param2="4" param3="12" param4="SysCMD" param5="1" param6="1" param7="500" ></macroadd>
    <macroadd param1="2" param2="5" param3="13" param4="SysCMD" param5="1" param6="1" param7="500" ></macroadd>
    <macroadd param1="2" param2="6" param3="14" param4="SysCMD" param5="1" param6="1" param7="500" ></macroadd>
    <macroadd param1="2" param2="7" param3="15" param4="SysCMD" param5="1" param6="1" param7="500" ></macroadd>
    <macroadd param1="2" param2="8" param3="16" param4="SysCMD" param5="1" param6="1" param7="500" ></macroadd>
  </Trigger2>
  <Trigger3>
    <macroadd param1="3" param2="1" param3="17" param4="SysCMD" param5="1" param6="1" param7="100" ></macroadd>
  </Trigger3>
</Cypress>
```

## TIME SETTINGS

Click on '**Time Settings**' to set the system time and to enable/disable the Daylight Saving Time(DST) function. Simply click on the white column and a calendar will appear for your selection with current time settings. Another simple few clicks to the enable/disable the DST with its start and end.

**Time**

**System Time:**

2016-04-08-Fri 13:41:37

Save

**Daylight Saving Time**

Use Daylight Saving

ENABLE

**Start**

Month: Jan Day: Thu Hour: 0 AM Day of Month: First

**End**

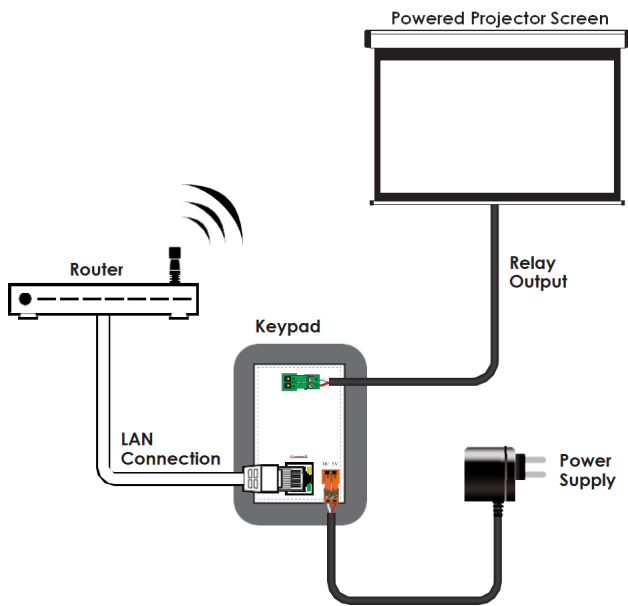
Month: Jan Day: Thu Hour: 1 AM Day of Month: First

Save

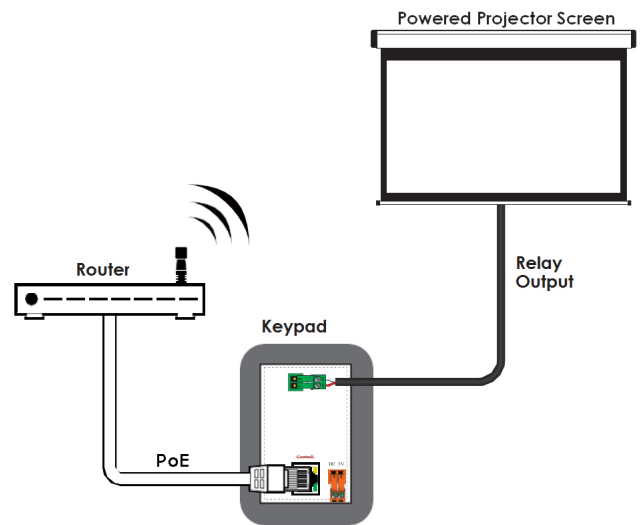
Version: v2.00

\*\*\*\***Note**\*\*\*\* The scheduling system will retain the last date and time set in memory for up to 48hrs after power loss. After 48hrs the system will reset the date and time automatically back to 2015/01/01 00:00:00. All other settings will remain.

## CONNECTION DIAGRAM



OR







PLEASE READ THE FOLLOWING TERMS AND CONDITIONS CAREFULLY BEFORE USING THIS HARDWARE, COMPONENTS AND SOFTWARE PROVIDED BY, THROUGH OR UNDER A-NeuVideo, INC (COLLECTIVELY, THE "PRODUCT"). By using installing or using the Product, you unconditionally signify your agreement to these Terms and Conditions. If you do not agree to these Terms and Conditions, do not use the Product and return the Product to A-NeuVideo, Inc. at the return address set forth on the Product's packing label at your expense. A-NeuVideo, Inc. may modify these Terms and Conditions at anytime, without notice to you. This unit comes with a 3 Year Warranty.

**RESTRICTIONS ON USE OF THE PRODUCT**

It is your responsibility to read and understand the installation and operation instructions, both verbal and in writing, provided to you with respect to the Product. You are authorized to use the Product solely in connection with such instructions. Any use of the Product not in accordance with such instructions shall void any warranty pertaining to the Product. Any and all damages that may occur in the use of the Product that is not strictly in accordance with such instructions shall be borne by you and you agree to indemnify and hold harmless A-NeuVideo, Inc. from and against any such damage.

The Product is protected by certain intellectual property rights owned by or licensed to A-NeuVideo. Any intellectual property rights pertaining to the Product are licensed to you by A-NeuVideo, Inc. and/or its affiliates, including any manufacturers or distributors of the Product (collectively, "A-NeuVideo") for your personal use only, provided that you do not change or delete any proprietary notices that may be provided with respect to the Product.

The Product is sold to you and any use of any associated intellectual property is deemed to be licensed to you by A-NeuVideo for your personal use only. A-NeuVideo does not transfer either the title or the intellectual property rights to the Product and A-NeuVideo retains full and complete title to the intellectual property rights therein. All trademarks and logos are owned by A-NeuVideo or its licensors and providers of the Product, and you may not copy or use them in any manner without the prior written consent of A-NeuVideo, which consent may be withheld at the sole discretion of A-NeuVideo.

The functionality and usability of the Product is controlled by A-NeuVideo, Inc. from its offices within the State of Texas, United States of America. A-NeuVideo makes no representation that materials pertaining to the Product are appropriate or available for use in other locations other than the shipping address you provided with respect thereto. You are advised that the Product may be subject to U.S. export controls.

**DISCLAIMERS AND LIMITATION OF LIABILITY**

A-NeuVideo may change or modify the Product at any time, from time to time.

THE PRODUCT IS PROVIDED "AS IS" AND WITHOUT WARRANTIES OF ANY KIND EITHER EXPRESS OR IMPLIED. A-NEUVIDEO DOES NOT WARRANT OR MAKE ANY REPRESENTATIONS REGARDING THE USE OR THE RESULTS OF THE USE OF THE PRODUCT'S CORRECTNESS, ACCURACY, RELIABILITY, OR OTHERWISE.

A-NeuVideo has no duty or policy to update any information or statements pertaining to the Product and, therefore, such information or statements should not be relied upon as being current as of the date you use the Product. Moreover, any portion of the materials pertaining to the Product may include technical inaccuracies or typographical errors. Changes may be made from time to time without notice with respect to the Product.

TO THE FULLEST EXTENT PERMISSIBLE PURSUANT TO APPLICABLE LAW, A-NEUVIDEO DISCLAIMS ALL WARRANTIES, EXPRESS OR IMPLIED, INCLUDING, BUT NOT LIMITED TO IMPLIED WARRANTIES OF MERCHANTABILITY, FITNESS FOR A PARTICULAR PURPOSE AND NON-INFRINGEMENT. A-NEUVIDEO DOES NOT WARRANT THE ACCURACY, COMPLETENESS OR USEFULNESS OF ANY INFORMATION WITH RESPECT TO THE PRODUCT. A-NEUVIDEO DOES NOT WARRANT THAT THE FUNCTIONS PERTAINING TO THE PRODUCT WILL BE ERROR-FREE, THAT DEFECTS WITH RESPECT TO THE PRODUCT WILL BE CORRECTED, OR THAT THE MATERIALS PERTAINING THERETO ARE FREE OF DEFECTS OR OTHER HARMFUL COMPONENTS. A-NEUVIDEO WILL USE ITS REASONABLE EFFORTS TO CORRECT ANY DEFECTS IN THE PRODUCT UPON TIMELY WRITTEN NOTICE FROM YOU NOT TO EXCEED 10 BUSINESS DAYS AFTER RECEIPT BY YOU OF THE PRODUCT, BUT YOU (AND NOT A-NEUVIDEO) ASSUME THE ENTIRE COST OF ALL NECESSARY SERVICING, REPAIR AND CORRECTION THAT WAS CAUSED BY YOU UNLESS OTHERWISE AGREED TO IN A SEPARATE WRITING BY A-NEUVIDEO.

UNDER NO CIRCUMSTANCES, INCLUDING, BUT NOT LIMITED TO, NEGLIGENCE, SHALL A-NEUVIDEO BE LIABLE FOR ANY SPECIAL OR CONSEQUENTIAL DAMAGES THAT RESULT FROM THE USE OF, OR THE INABILITY TO USE THE PRODUCT IN ACCORDANCE WITH ITS SPECIFICATIONS, EVEN IF A-NEUVIDEO OR ITS REPRESENTATIVES HAVE BEEN ADVISED OF THE POSSIBILITY OF SUCH DAMAGES. IN NO EVENT SHALL A-NEUVIDEO'S TOTAL LIABILITY TO YOU FROM ALL DAMAGES, LOSSES, AND CAUSES OF ACTION (WHETHER IN CONTRACT, OR OTHERWISE) EXCEED THE AMOUNT YOU PAID TO A-NEUVIDEO, IF ANY, FOR THE PRODUCT.