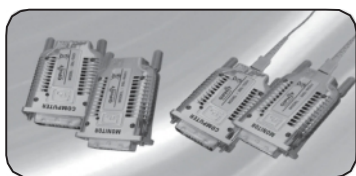


# DVI-4STR/DVI-1STR User's Manual

## DVI-4STR/DVI-1STR Installation Guide



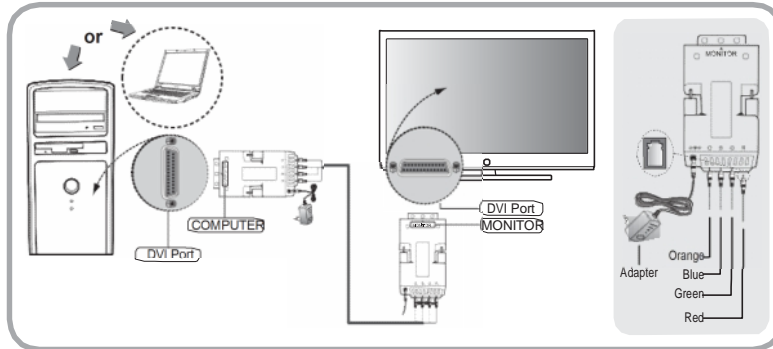


# DVI-4STR/1STR Installation Guide

## • Connection (DVI-4STR)

This product is composed of a transmitter and a receiver. The transmitter should be connected to the computer DVI port, whereas the receiver should be connected to the DVI port of the digital display. On top of that this product is designed to connect with 4 channels standard optical cable of LC TYPE in between transmitter and receiver.

As marked R, G, B, O, please connect "R" to the red color optical cable, "G" to the green one, "B" to the blue one and "O" to the orange one.

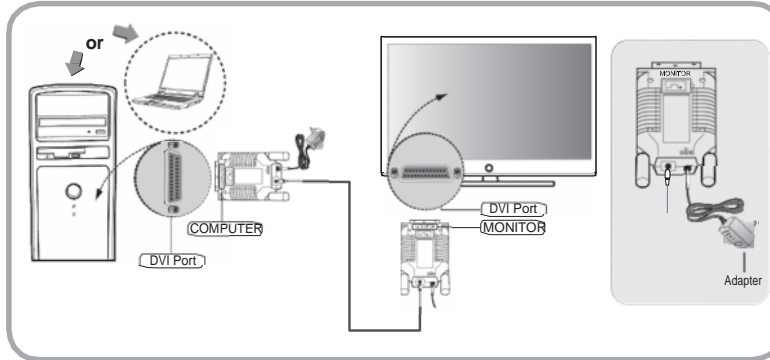


## • Contact us (KVM Switch Tech USA)

KVM SWITCH TECH  
Email: [Sales@kvmswitchtech.com](mailto:Sales@kvmswitchtech.com)  
Web: [www.KVMSwitchTech.com](http://www.KVMSwitchTech.com)

• **Connection (DVI-1STR)**

This product is composed of a transmitter and a receiver. The transmitter should be connected to the computer DVI port, whereas the receiver should be connected to the DVI port of the digital display. On top of that this product is designed to connect with 1 channel standard optical cable of SC TYPE in between transmitter and receiver.





# DVI-4STR/1STR Installation Guide

## • Self EDID Detecting

You can change factory setting of resolution due to connect other monitors as following orders.

1. Power on your display.
  2. Connect transmitter to the DVI of display.
  3. Plug DC power in to the transmitter.
  4. Check if LED blinks rapidly for a few seconds. EDID is well acknowledged once the blinking stops.
  5. Connect transmitter to the PC and receiver to the display. Then please plug the DC power in to the receiver.
  6. Connect the optical fiber between transmitter and receiver. Using multimode optical fiber is a must.
  7. Restart your computer.
- ※ If transmitter's power LED doesn't light up, please plug the DC power adapter for transmitter.

## • Caution

Use the DC adapter (5V, 2A) included in the product for the receiver, which is connected to the monitor and requires the external power supply. The transmitter connect-ed to the computer normally used the computer power. Therefore, no external DC adapter is required except some computers with the special specification. In this case, use the external DC adapter used for the receiver.

(Connect transmitter to adapter only in case of either insufficient internal power or no power from computer.)

**• FCC**

This device complies with part 15 of the FCC rules.  
 Operation is subject to the following two condition :(1)  
 This device may not cause harmful interface, and(2) this device must accept any interface  
 received, including interface that may cause undesired operation.

**CAUTION:** Any changes or modification in construction of  
 this device which are not expressly approved by the party  
 responsible for compliance could void the user's authority to  
 operate the equipment.

**• DVI-4STR**  
 Invisible Laser Radiation  
 Do not view directly with Optical instrument  
 CLASS 1 Laser product  
 Wave length 633-660 nm  
 Maximum Power per Channel 1mW

**• DVI-1STR**  
 Invisible Laser Radiation  
 Do not view directly with Optical instruments  
 CLASS 1M Laser product  
 IEC 60825-1:1993 + A1:1997 + A2:2001

**• Troubleshooting**

Screen is not displayed.	<ul style="list-style-type: none"> <li>- Check if the PC power is on.</li> <li>- Check if connection to the computer and the monitor are correct.</li> <li>- Turn the PC power off and on again.</li> </ul>
Noise is shown on the screen.	<ul style="list-style-type: none"> <li>-Check the DVI connection.</li> <li>-Check the display resolution.</li> </ul>

- If the malfunction is not fixed by the above measures, please contact with the A/S center.

### • Precautions for safety

Make sure to comply with precautions to prevent danger and damage on the property through proper usage product.



If precautions are ignored, if may incur  
decease or serious injury.



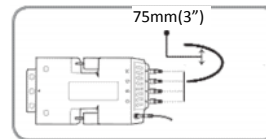
If precautions are ignored, if may incur  
decease or serious injury.

### • Warnings ⚠

1. Do not plug in several power cords. It can cause overheating and a fire.
2. Do not bend the power cord by force, or do not put heavy object on the power cord to prevent breakdown. It can cause a fire.
3. Do not touch the power plug with wet hands. You may be struck by electricity.
4. Insert the power plug firmly to avoid shaking. If not inserted firmly, It can cause a fire.
5. Do not disassemble, repair or modify. It can cause a fire and an injury by electrical shock due to abnormal operation.
6. Do not insert a metallic material (hair pin or ironware) or combustible foreign object (match, paper and so on) into the terminal hole, or drop the terminal. It may cause a fire and an injury by electrical shock,
7. Do not put vase, flowerpot, cup, cosmetics, medicines and container filled with water near the product. It may cause a fire and an injury by electrical shock, or injury by dropping.
8. Stay away from the direct sunlight and the heat source like the heater. It may cause a fire.
9. Do not spray water on the product. It may cause a fire and an injury by electrical shock. Scrub the product surface softly with a dry towel.
10. Use the DC power adapter with correct specification. It may cause a fire.

### • Cautions ⚠

1. Do not put the heavy object on top of the product. It may cause malfunction.
2. Put the product in the even and stable location. If the product



- falls down or dropped, It may cause an injury and malfunction.
3. Stay away from the place with too high temperature (over 50°C) and too low temperature (under 0°C), or the high humidity. It may cause a fire and an injury by electrical shock.
  4. **Do not twist or pull by force the both ends of the optical cable. It can cause malfunction** (Minimum bending diameter: 75mm).

# WARRANTY

We, KVMSWITCHTECH hereby warrant the final purchase of our product as follows.  
In the case of troubles on our products, please contact the shop purchased.

Name of products		Name of Model	
Date Purchased	Day Month Year	Serial No.	
Shop purchased			

## One year limited warranty

Our customers have right to be served with free of charge when there is trouble in this product during 1(one) year from the day purchased.

## Out of warranty services

When you request services (in the case of non manufacturing defects but the troubles by misusage), may served with charge as follows.

defects of products caused by accident, disaster  
damages of products caused by the customer's carelessness or mistaken application  
damages of products caused by the application of the parts or products  
not supplied or sold by our company  
damages of products and related defects caused by not our staff or the  
men or group not nominated by us for services.

The interchanged parts and products for maintenance services shall be replaced as new parts and products operating normally, and the inter-changed parts and products shall be subjected to our company.





## **KVM SWITCH TECH**

Email: [Sales@kvmswitchtech.com](mailto:Sales@kvmswitchtech.com)

Web: [www.KVMSwitchTech.com](http://www.KVMSwitchTech.com)